

**Eniva
Research
Group**

Research Initiative: Fluid Dynamics Investigation of agitation vessels of the VIBE Nutraceutical.

2006

To Whom It May Concern:

Eniva Nutraceuticals takes great pride and care in the formulation and manufacturing of its wellness products. Eniva is dedicated to producing nutraceuticals that are safe, quality-driven and effective. To do so, we subject our products and the product development process to serious review and rigorous testing.

Due to the potential for poor agitation, thermogenic degradation and incomplete reaction when moving to large scale production, the Eniva Research and Development Team undertook the task of evaluating several components of the proprietary VIBE manufacturing process.

Part of this endeavor was to ensure no thermogenic degradation of ingredients, as well as to ensure proper agitation at different stages when creating VIBE in larger than 1,000 gallon quantities.

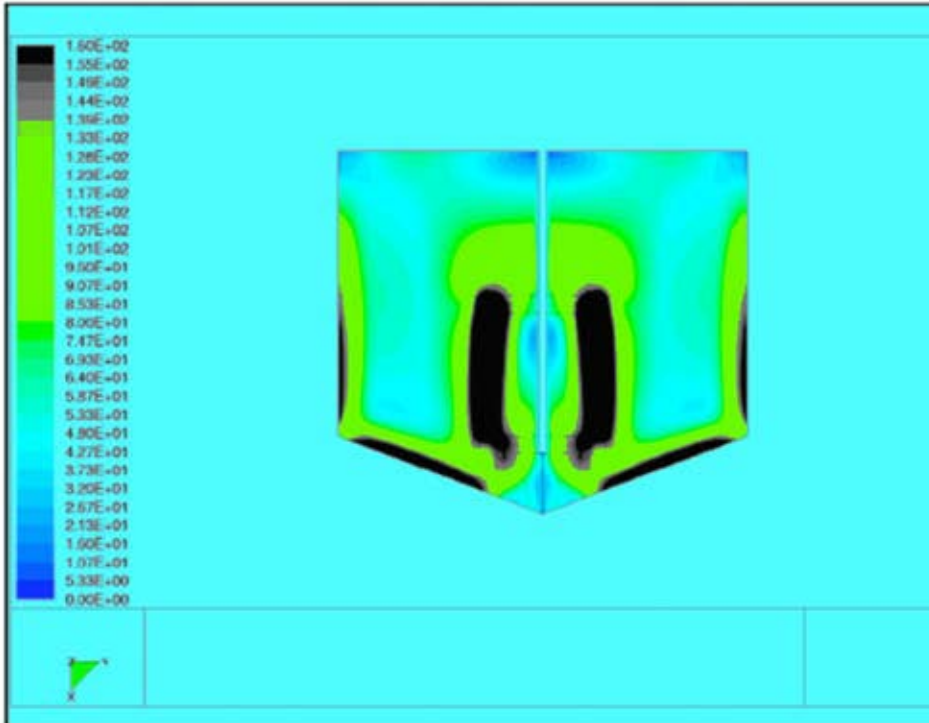
As a part of this process, fluid dynamic diagrams, flow and thermogenic mapping was performed on several vessels used during the process. Please find enclosed here examples of calculations and mappings used to ensure product quality.

As always, the Eniva Research Group is committed to providing world class nutraceuticals to promote wellness. To accomplish this, evaluation of all aspects of concepting, formulation, development, scale-up and eventual large scale manufacturing processes must be performed. Know that this evaluation is done on a regular basis and will continue to provide a foundation of excellence for the Eniva Nutraceutical Products both now and in the future.

Sincerely,

Eniva Research Group.

Thermographic Mapping Example:



Fluid Dynamics Flow Analysis:

